

Two Years On: the Traveller Commissioning Strategy in Action 2013/14

Foreword

Welcome to our second Traveller Commissioning Strategy update which lets you know about some of the progress we have made and some of the challenges we have faced during the second year of its implementation.

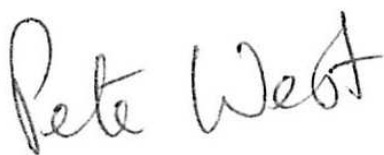
Our strategy is a partnership between the Council, Clinical Commissioners Group (NHS) and the Police to tackle the fundamental inequalities Traveller communities face and the impact that unauthorised encampments have on local communities and Travellers. We are committed to taking a firm and fair approach that will not only reduce the inequalities experienced by Travellers but will also support community cohesion.

We have been working closely with the South Downs National Park to progress our proposals for the new permanent site at Horsdean and our planning application has now been approved. The permanent site is critical to expanding our city's provision to help minimise the impact of unauthorised encampments. We expect work to be completed early in 2016.

However, the development of the new Horsdean site will pose a challenge for the city through 2015 as we will have to close the transit site during the works. Our proposal for a temporary site was rejected which means there will be nowhere for visiting Travellers to stop. This is expected to lead to an increase in unauthorised encampments and the council's Traveller Liaison Team will be working closely with the Police to minimise the disruption caused by this.

To help tackle the lower life expectancy, poor health and educational attainment faced by Travellers when compared to the general population, the CCG are using the findings of their Traveller engagement to help identify priorities and actions for health services in their new Operating Plan and the Council has set up a new City Traveller Education Unit. These changes are allowing services to build trust with Travelling communities to raise awareness and improve the take up of services to help reduce inequality.

Whilst next year is likely to be a difficult one due to the disruption caused by unauthorised encampments, the opening of the new site in 2016 will mean this is short-lived and Brighton & Hove will have taken a major step in increasing its pitch capacity to help tackle unauthorised encampments and meeting our duty of care to some of the city's most disadvantaged citizens.



Councillor Pete West

Chair of Environment, Transport & Sustainability Committee

Our Strategy

The city's **Traveller Commissioning Strategy 2012** was approved by the Council in March 2012 with a vision of:

Balancing the needs of Traveller communities and the City's settled communities to reduce inequality and improve community relations

Our strategy is split into 4 key priority areas aimed at supporting Travellers to improve the quality of their lives and reduce the tensions between communities:

- Improve site availability
- Improve health, safety and wellbeing
- Improve education outcomes
- Improve community cohesion

Action to address these priorities will help ensure we have adequate Traveller pitch provision to improve stability for those Travellers living in and visiting the city. This will help Travellers access education and health services more effectively and also reduce pressures on the city's parks and open spaces to tackle anti-social behaviour and improve community cohesion.

Development of Traveller Commissioning Strategy was done in stages that gave us that opportunity to engage and consult with residents, Travellers, Community & Voluntary Sector Organisations, service commissioners and providers, community champions, pressure groups and others.

The Traveller Commissioning Strategy has not been developed in isolation but has involved services across the Council and beyond. Our partnership approach brought together the Council, NHS Sussex, Traveller Education Team and Sussex Police.

In addition the Environment & Community Safety Overview & Scrutiny Committee Traveller Strategy Scrutiny Panel shadowed the development of the strategy from the outset and recommendations submitted by the panel were integrated into the final strategy.

The Scrutiny team won the Centre for Public Scrutiny award for Innovation (for the second year running) for its work on the scrutiny panel set up to shadow the development of the new Traveller Strategy.

Our strategy has identified the importance of developing a regional approach to tackle Traveller inequality and the shortage of suitable stopping places, and a number of groups have been set up and consultation processes established to address cross boundary concerns and issues.

Unauthorised Encampments

Government guidelines recognise that due to the national shortage of stopping places Travellers will continue to set up unauthorised encampments as they follow their traditional routes for seasonal work.

We want to provide a permanent site to free up space on the transit site. We know that this will not fully resolve the issue of unauthorised encampments and work closely with the Police to effectively manage encampments which happen.

Overall there were 52 unauthorised encampments in 2013/14, a decrease on 2012/13 but more than in 2011/12.¹

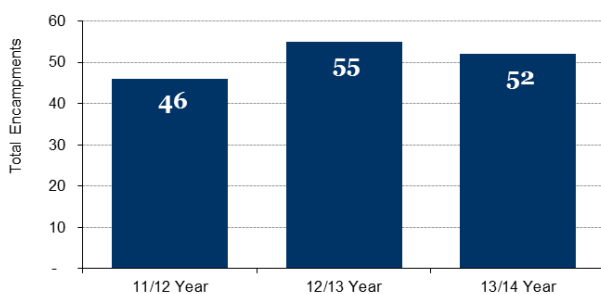
April to June 2013 saw a noticeable reduction in encampments when compared to the previous year, 11 instead of 26. However, there was a slight increase in from July to Sept (19 to 21) and Oct to Dec (10 to 12) and a large increase between January and March 2014 (4 to 10).²

On average, encampments are moved on after about a week which helps to ensure residents are able to get back to enjoying their green spaces as quick as possible. However, moving encampments quickly can also lead to more encampments as groups fragment to other parts of the city.

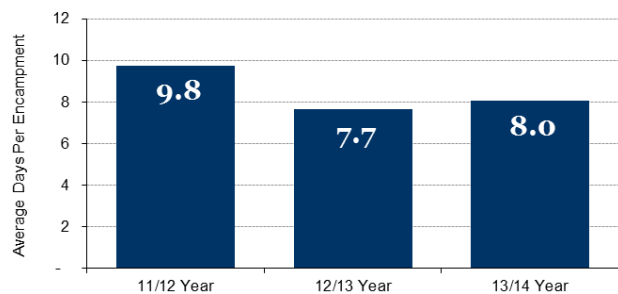
When making decisions with the Police about moving on an encampment we have to balance the needs of the community that has lost the use of it's open space, the welfare needs of the Travellers and also the likely impact that a fresh encampment will have elsewhere in the city.

When an encampment is present regular high profile visits by the Police and Council's Traveller Liaison Team help to reassure both residents and Travellers to minimise the disruption and anti social behaviour that sites can attract. A new waste contract helps to ensure that sites are effectively and swiftly cleaned.

Brighton & Hove
Unauthorised Traveller Encampments
Yearly Total



Brighton & Hove
Unauthorised Traveller Encampments
Average Days per Encampment



¹ These figures exclude Van Dwellers as they fall outside the scope of this strategy

² Quarterly figures total more than the annual number as some encampments start in one quarter and finish in another so are counted twice

Outcome 1: Improve site availability

Developing the New Permanent Site

In 2014, the plans for the new permanent site next to the existing transit Traveller site at Horsdean were approved by the South Downs National Park Authority.

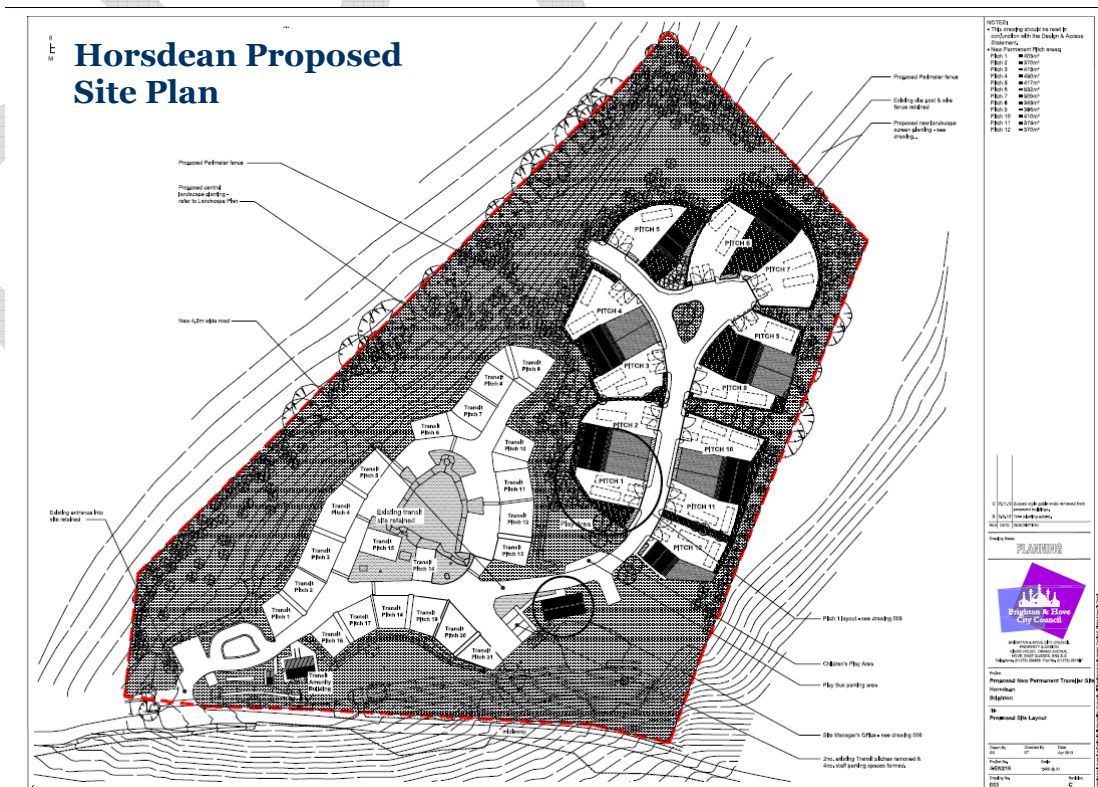
The site was chosen following an extensive selection process and will provide 12 new permanent pitches that will provide space for a static caravan and other vehicles with a kitchen, bathroom and dayroom provided in an amenity block.

The approval of the plans for this new site has been a lengthy process with extensive consultation, not only by the council but also by the South Downs National Park Authority (SDNPA).

Development of the new site can now go ahead after the decision of the Communities and Local Government secretary not to call in the plans.

Detailed work has been undertaken to ensure that the design of the site will not only meet the needs of Travellers but will not spoil the natural beauty of landscape.

A value engineering exercise has been undertaken to reduce construction costs and these will be the subject of a planning application for minor modifications to SDNPA, along with applications for the discharge of various planning conditions.

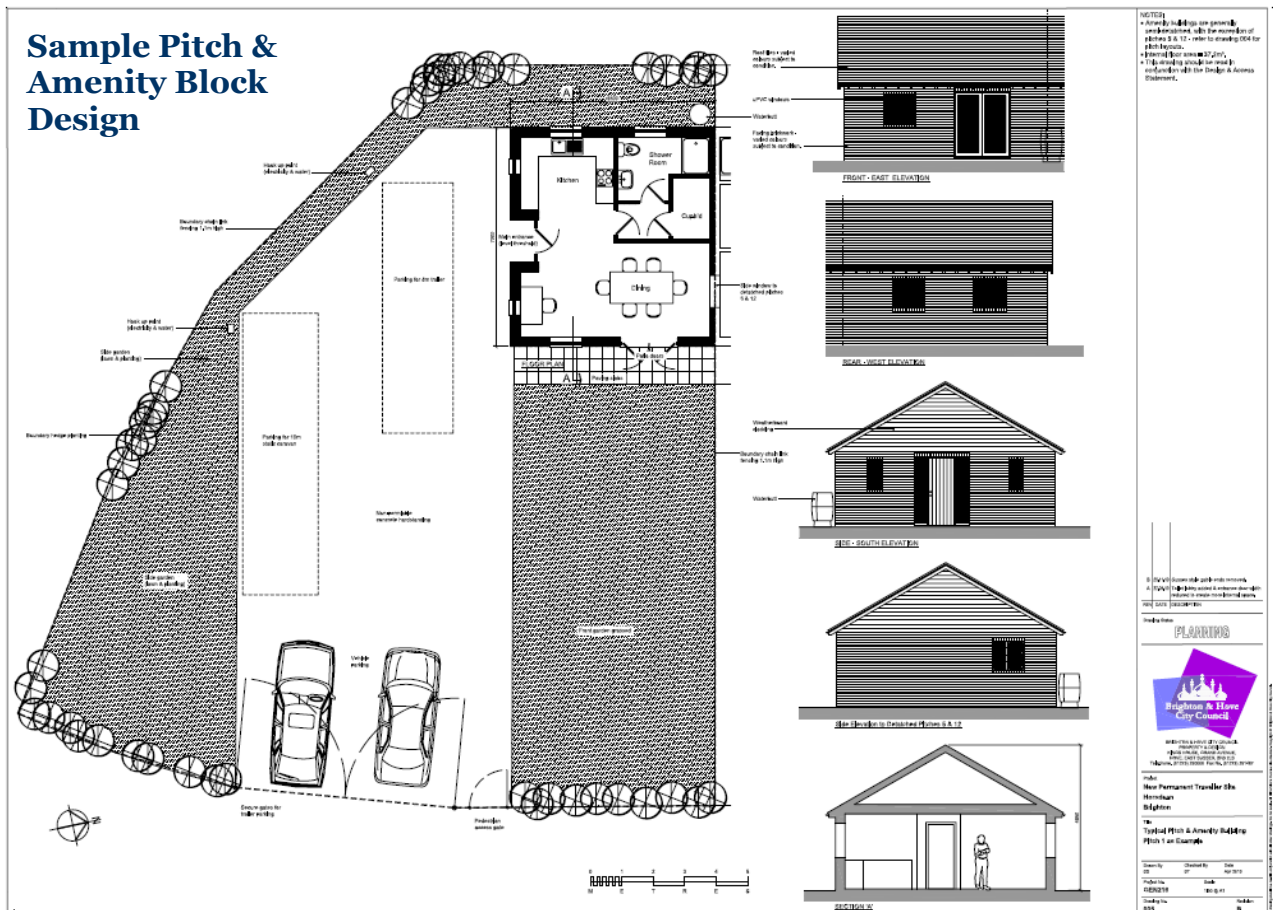


The permanent site will bring stability to Traveller families wanting to live a more settled lifestyle and reduce the likelihood of unauthorised encampments by freeing up pitches on the transitional site.

A management building will be provided for the Traveller Liaison Team to enable closer and better working with the Traveller communities and to reduce management costs.

The site is expected to be completed by early 2016 and provide homes for Traveller families with a local links to the community, many of who regularly occupy pitches on the transit site.

The Travellers will have secure tenancies that, like all social housing tenancies, will set down tenancy rules and requirements that tenants are required to adhere to, will pay rent and council tax.



Outcome 2: Improve health, safety and wellbeing

Clinical Commissioning Group 2 Year Operating Plan

Brighton & Hove Clinical Commissioning Group (CCG) has sought to capture the issues that face the different Traveller communities through engagement and consultation and address these issues in their operating plans. To facilitate this, the CCG has funded Friends, Families and Travellers (FFT) to engage with the Traveller communities and feedback on the specific issues raised by the communities.

The findings from the FFT Engagement Annual Report 2014 will be used to refresh the CCGs operating plan. This plan will shape the services by setting out the achievement to date, highlight challenges and articulating the deliverables for 2015/16. The plan will be consulted on in January 2015 and published in April 2015.

Violence against Women and Girls Strategy

From 2014/15, domestic violence and sexual violence has been integrated into the overarching Violence against Women & Girls Strategy. In June 2014 the Annual Action Plan was approved by the VAWG Programme Board.

The Strategy and Action Plan include commitments to learn from capacity building work completed with BME women's groups to inform capacity building Gypsy and Traveller communities by developing women's peer education and similar programmes and to improve responses to domestic and sexual violence amongst Gypsy and Traveller communities; this includes ensuring any new site development addresses the safety needs of women and children in its design

Outcome 3: Improve education outcomes

New Traveller Education Unit

The council is in the process of establishing a new City Traveller Education Unit following termination of the contract with East Sussex County Council. The unit will provide more resources to address Traveller children's access to education and attendance at school together with resources to inform and support schools' in their responsibilities for Traveller children and their families. Although there has been continued outreach to engage Traveller children and their families in

education, some of the outreach has had to be scaled down while the new unit is in the process of being fully set-up. The development of the new 'in-house' unit has enabled a re-evaluation and reorganisation of support for Traveller pupils and families and opportunities for greater participation from social care has seen the introduction of a designated social worker for Traveller families with other specialist outreach health and education workers.

Outcome 4: Improve community cohesion

Managing Encampments

In 2014, Sussex Police's Operation Monza was reviewed in response to the need for a more flexible approach with a seamless link between the Police Gypsy & Traveller Liaison Officer, neighbourhood policing teams and council Traveller Liaison Team.

The Officer, with support from the neighbourhood policing team manage unauthorised encampments in the city, supporting the council and fulfilling the responsibility outlined within the Community Reassurance Plan.

Ongoing sharing of information and good practice within the city and across the region is facilitated through regular meetings. The Traveller Liaison Team attends monthly meeting with other frontline staff working with Travellers and bi-monthly strategic meetings with support services to ensure effective joint working and best delivery of services to Travellers. Good practice across the region is shared with other professionals working with Travellers at quarterly Pan Sussex Gypsy and Traveller meetings.

A new Community Impact Assessment protocol and recording form, developed by the council, is now in use. On the arrival of a new encampment, a site assessment and community impact assessments are carried out with the neighbourhood Policing team to ensure that appropriate action is taken on a 'case by case' basis, taking into account relevant issues.

For both the Police and council, 2015 will provide significant challenges. The potential lack of a transit site due to the development of the permanent site, will undoubtedly increase the number of unauthorised encampments and prevent use of powers under S62A.

Community Safety Casework Team

Direct outreach work and contact with the traveller communities and equipping front line professional with appropriate information are being used to increase trust and confidence, create awareness of the reporting mechanisms, and support available in the city to increase reporting. During two visits to the traveller encampments, further 7 racist incidents were anecdotally reported to the caseworker directly. Caseworkers have also attended four meetings of women travellers (with 20 – 30 travellers in attendance) to build trust and increase reporting.

As a result of partnership with Traveller Liaison Team, in 6 cases between August 2013 and September 2014, members of public who contacted the Traveller Liaison Team and were racially abusive towards travellers were given warnings by either the police or the Community Safety Casework Team or by both the agencies. In such instances, the perpetrators language and prejudices were challenged and as a result there have not been any further reports of repeat offending by any of them.

Outcome 1: Improve site availability

Strategic Action	Target	Current Position	Lead Partner
Goal 1	Develop a new permanent Traveller site		
Consult on preferred site prior to planning application	March - April 2012	Complete: preferred site identified and local consultation taken place	Brighton & Hove City Council
Obtain planning permission for preferred site	Updated timescale: Application delayed from 2012 to 2013	Planning permission obtained in June 2014 from South Downs National Park Authority. Work about to commence on discharging planning conditions	Brighton & Hove City Council & South Downs National Park
Develop site	Subject to planning permission	Expected development 2015 to 2016	Brighton & Hove City Council
Develop allocations and management policies	Subject to planning permission	Allocations policy for the permanent site has been developed and management policies are being updated	Brighton & Hove City Council
Open site	Subject to planning permission	Expected opening now late 2015 / early 2016	Brighton & Hove City Council
Goal 2	Ensure effective management and use of the Horsdean Transit Site		
Appoint a site warden for the Horsdean Transit Site	Recruitment planned for Spring 2012	Following a restructure of the Traveller Liaison Team, 2 Site & Support Officers recruited	Brighton & Hove City Council
Review occupancy of the Transit Site to provide capacity to help minimise unauthorised encampments	Spring/Summer 2012 (and ongoing after)	Capacity of the site has been restricted to 10 pitches due to the on-going drainage issues.	Brighton & Hove City Council
Improve the collection of fees and service charges and deal effectively with arrears	Summer 2012 (and ongoing after)	Will be further improved with the redevelopment of the site - all rents and service charges will be reviewed	Brighton & Hove City Council

Strategic Action	Target	Current Position	Lead Partner
Goal 3 Develop procedures for Tolerated sites			
Research Good Practice and develop guidance on toleration	Spring 2013	Research has been concluded and a toleration protocol developed and implemented	Brighton & Hove City Council
Consult and Equality Impact Assessment	Subject to guidance	Consultation on the Toleration protocol and EIA completed	Brighton & Hove City Council
Implement	Subject to guidance	Toleration protocol has been implemented	Brighton & Hove City Council
Goal 4 Consider the need for future site provision			
Traveller accommodation needs assessment	Subject to guidance but required to plan for post 2016 need	New GTAA Commissioned with adjoining East Sussex District Councils and South Downs National Park Authority. Publication due by December 2014	Brighton & Hove City Council
Monitor size, duration, frequency, make up of unauthorised encampments	Build up a picture of need and demand particularly once permanent site open	All aspects of unauthorised encampments continue to be monitored and reported back to members	Brighton & Hove City Council
Implement further requirements of new government planning guidance	Subject to guidance	Updated GTAA will provide revised pitch requirements for City Plan period	Brighton & Hove City Council
Plan according to new guidance	Subject to guidance	In progress: Traveller Accommodation Policy CP22 reflects new guidance	Brighton & Hove City Council
Ensure new City Plan recognises identified needs to 2016 and the need to consider future needs provision	Plan proposed adoption end 2013	In progress: City Plan sets out requirements to 2019 and commits to further needs assessment for remaining Plan period.	Brighton & Hove City Council
Goal 5 To provide advice to Travellers seeking to buy their own land for developing a site			
Planning advice to travellers seeking to buy their own land for developing a site	Appropriate advice provided as and when required to build on existing good practice	No approaches received from Gypsy or Traveller groups to develop their own sites	Brighton & Hove City Council

Outcome 2: Improve health, safety and wellbeing

Strategic Action	Target	Current Position	Lead Partner
Goal 6 Improve access to health and other support services for Travellers in the city			
Conduct specific needs assessment on the health and wellbeing of Travellers	November 2012	Complete: The needs assessment was carried out during summer 2012	Public Health & NHS Sussex
Develop an action plan in response the findings of the needs assessment in order to improve access to healthcare services for members of the G&T Community	March 2013 (and ongoing)	Brighton and Hove CCG funded Friends, Families and Travellers to engage with Traveller communities Findings will shape the operating plan for 2015/16 and future plans	Clinical Commissioning Group
Citywide review of Health Visitors to include the impact on the Travelling community	2012/14	Ongoing: Health visiting commissioned by NHS England and this will be taken forward through the Local Implementation Plan	NHS Sussex & Brighton & Hove City Council
Goal 7 To improve cultural awareness in health services			
Cultural awareness training for Clinical Commissioners Group staff and lead clinicians	April 2013	Complete and included in the Annual Operating Plan for 2013/14. Planning a Protected Learning Scheme took place in November 2013	CCG & NHS Sussex
Goal 8 To improve ethnic monitoring in health and other services to include Travellers			
The Trust will ensure that all service providers are aware of the monitoring framework and use it to monitor service uptake and experience in order to identify key issues for Traveller communities	Ongoing – to be reviewed as part of needs assessment	E&D Action plan reviewed and updated each year to improve monitoring	NHS Brighton & Hove

Strategic Action	Target	Current Position	Lead Partner
Goal 9 Tackle domestic and sexual violence			
Integrate actions to address domestic and sexual violence in Traveller communities into DV and SV Action Plans and in the Violence Against Women & Girls Strategy	Plan in place April 2012	<p>Completed: Domestic violence and sexual violence integrated into overarching Violence against Women & Girls Strategy from 2014-15</p> <p>Ongoing: Needs of Traveller communities to be included in the future domestic and sexual violence specialist services Commissioned for 2015</p>	Safe in the City Partnership
Develop a package of support for Travellers subject to the overall needs within the DV Commissioning Plan, SV Action Plan and the Violence Against Women & Girls Strategy	To be developed in 2012/13	<p>Ongoing: Working with Friends, Families and Travellers to develop an Action Plan of awareness raising and resources for professionals</p> <p>Complete: Provision of support to Traveller community included within the future Domestic and Sexual Violence Specialist Services Commission for 2015</p>	Safe in the City Partnership working with other organisations
Integrate work of Traveller Education Team (Goal 13) with Healthy Schools Team work on gender equality / domestic and sexual violence prevention	2012/13. Integration of awareness and education work. Clear pathways to services for young people for Traveller children needing support	Ongoing: Planned review of Preventative Education Project due in January 2015, which will incorporate options for work with Traveller Education Team (Goal 13)	BHCC Healthy Schools Team

Strategic Outcome 3: Improve education outcomes

Strategic Action	Target	Current Position	Lead Partner
Goal 10 Raise standards by ensuring successful education provision for Traveller children			
New families are visited by Outreach Team to engage with families, assess need according to age and arrange admission into local school	1) All pre school children are engaged 2) All school aged children enrolled in local provision	Outreach continued to engage families in education. High % of children from unauthorised encampments not engaged	Traveller Education Team
Children are supported into new school by peripatetic teacher	Successful admission and inclusion into new school	New peripatetic teacher (Sept 14) Best practice adopted and applied	Traveller Education Team
Home school liaison provided by outreach team and Education Welfare Service to ensure good attendance	All children in school with attendance over 90%	Attendance for short stay 2013/14 - 67% actual / possible. Annual Report 2014	Traveller Education Team & Education Welfare Service
Support provided to local school and their communities closest to new site via <ul style="list-style-type: none"> training re cultural awareness and successful practice in integrating Traveller children additional teaching support to Traveller children with learning deficit 	1) All receiving schools cultural awareness training and educational resources 2) New Traveller children settled in schools and support plans in place where necessary	Ongoing: focus once site building commences and end date a reality	Traveller Education Team
Collaborate with voluntary sector and families to provide/access out of school activities	New children integrating into local community	Ongoing - current v short stays mitigates against integration	Youth Service, Traveller Education Team, Traveller Organisations

Strategic Action	Target	Current Position	Lead Partner
Goal 11 Raise the engagement with learning opportunities for all traveller families visiting Brighton and Hove			
To continue to provide a specialist/outreach provision to support all Traveller families to access learning opportunities	Increase uptake in local provision including family learning	No additional adult/family learning during 2013/14	Traveller Education Team
To provide additional teaching support for those with learning deficit (due to mobility)	Improvement in attainment - Foundation Stage, KS2 and 4	No improvement in participation or attainment due to greater turbulence in movement of families plus change of contract with ESCC	Traveller Education Team & Schools
To offer alternative education provision where required for 14-19 secondary aged pupils	Improved uptake of educational opportunities	Although interest expressed in vocational courses, there has been no uptake. The new permanent site should enable uptake	Traveller Education Team & Engagement Team
Involve Traveller groups in education services development	Consult with local Travellers	Ongoing requests from Traveller families for outreach provision via mobile unit. We are in the process of sourcing a suitable replacement vehicle.	Traveller Education Team & Schools/Nurseries
Goal 12 Secure engagement of families from the early years			
To deliver weekly outreach under 5s play sessions to all families using the Traveller education team playbus in partnership with health and other professionals.	To engage all newly arrived families with mainstream services. eg children centres, early years settings and specialist services eg speech and language therapists	Greater participation from social care with families in need. Children's Services In process of sourcing new vehicle for range of educational and health needs	Traveller Education Team & Health visitors
To provide a parent and under 5s drop-in group for Traveller parents on site	Attendance and participation in the bespoke group within Children's Centre and to increase participation and inclusion in wider children centre activities	Families linked into and attended Children's Centre for -5 activities and advice but attendance not sustained. Requested "on site" provision. To be revisited when new site is opened 2015	Early Years Coordinator Traveller Education Team Moulsecomb Children's Centre

Strategic Action	Target	Current Position	Lead Partner
Involve Traveller groups in education services development	Improve participation and uptake of 2 yr old nursery funding	2014 Traveller Women's group formed. Adviser attends. Consultation both formal and informal. Uptake of 2 year funding - 2013/2014. 3 children each year	Health Visitors, Early Years Coordinator, Traveller Education Team
To provide training to early years settings, children's centres, school staff re good practice in working with GRT families as both bespoke and part of LEAs training programme	Increased skills and confidence of EYs staff in working with GRT families – result increase in uptake of mainstream provision	Training part of Council's Workforce and Development annual programme, plus bespoke training to schools	Traveller Education Team
To arrange nursery places when necessary to newly arrived families and support child into nursery, to provide teaching support to children with an identified need	Increased uptake of Early Years Educational Entitlement (EYEE)	2013/14 – 11 children accessed nursery	Traveller Education Team
Goal 13 Improve further the awareness in schools about Traveller History and Culture			
Offer cultural awareness training to all educational establishments and to embed this in LEAs rolling training programme	Uptake of training	Course well attended with request for full day training	Traveller Education Team, Healthy Schools Team
Promote national initiatives such as Gypsy Roma Traveller History Month and encourage schools to participate	Schools participation in GRT History Month	Participation in Holocaust Memorial Day. GRT History month June and participation in national competition	Traveller Education Team, Partnered with Traveller Organisations
Involve Traveller groups in education services development of cultural awareness and equalities training	Travellers Participation in training	Travellers views (via DVD) in training programme plus inclusion of delegates with a GRT heritage	Traveller Education Team, Partnered with Traveller Organisations and individuals
Continue to contribute to schools curriculum diversity by providing lesson models, resources and artefacts.	Culturally reflective curriculum in schools with Traveller children on roll	Integral part of peripatetic Traveller teacher's remit.	Traveller Education Team, Healthy Schools Team
Information for schools updated and available via website	Schools have accessible resources	Support for Traveller pupils and families in process of being re-evaluated and reorganised	Traveller Education Team

Strategic Outcome 4: Improve community cohesion

Strategic Action	Target	Current Position	Lead Partner
Goal 14 Increasing awareness of different cultures			
Develop a greater understanding amongst the media of Traveller issues	Ongoing work	Work ongoing to support the Traveller team and provide a clear and consistent message. Joint comms approach is being developed with the Police	Brighton & Hove City Council
Improve further the awareness in schools about Traveller History and Culture	Various (see Goal 12)	Ongoing: Various (see Goal 12)	Traveller Education Team, and Traveller Orgs.
BHCC Promotion of GRT History Month	June - annually	Promoted Friends Families & Travellers' event as part of Gypsy Roma Traveller History Month	BHCC Communities & Equality Team
Run regular Councillor Traveller awareness sessions	2012 & 2013 (and every 2 years following elections)	Traveller awareness sessions offered to each of the 3 political groups and provided at separate group meetings	Brighton & Hove City Council
Traveller staff – workforce monitoring and action/support from BME Workers Forum	Various as part of People Strategy and Implementation plan	Gypsy/Traveller category included in equalities monitoring template and staff equalities monitoring Black & Minority Ethnic Workers Forum continues to be promoted by council	Brighton & Hove City Council
Improve Community Development Workers / Local Action Teams	July 2012 and ongoing	New 3 year delivery of infrastructure, community development & community engagement commissioned in July 2014	BHCC, Friends Families & Travellers
Goal 15 Involve Travellers and their advocates in service design and delivery			
Set up a Brighton & Hove Traveller Forum	Spring 2013	Group regularly meeting comprised of those likely to be living on the new permanent site with Housing, FFT, Education, Police and Community Safety. Invites extending to Health and Childrens' Services	Brighton & Hove City Council

Two Years On:

The Traveller Commissioning Strategy in Action 2013/14

Progress opportunities for supporting Travellers into work and learning	To be determined	Work progressing with the Inclusion Team to identify individual learning needs and support in accessing classes	Brighton & Hove City Council
Strategic Action	Target	Current Position	Lead Partner
Involve Travellers in development and design of permanent site	Updated timescale. Throughout 2012-2014	Travellers and Traveller groups continue to be consulted in the design and development of site.	Brighton & Hove City Council
Consult on procedures for Tolerated sites	Subject to draft guidance	Consultation on the toleration protocol competed with Travellers and their advocates	Brighton & Hove City Council
Involve Travellers in service development, cultural awareness, equalities training	Travellers participating in training	DVD entitled "No Shame" will highlight the issues of local domestic violence experienced by Traveller women and support options available	Traveller Education Team, Schools/Nurseries, Traveller Orgs.

Goal 16

Effective management of unauthorised encampments

To review and update the Operation Monza Tactical Plan	Annual review according to operational need	Operation Monza reviewed. The PIER plan continues under headings of Prevention, Intelligence, Enforcement and Reassurance.	Sussex Police
To provide a dedicated full time Traveller Liaison Officer	Full time officer in post	Brighton retains a full time Gypsy and Traveller Liaison Officer	Sussex Police
Ensure Section 61 and Section 62A CJ&POA 1994 applications comply with guidance	As far as possible all applications are to be considered by local Commanders to ensure consistency	Both Section 61 and 62A powers used over reporting period. This process involves full reporting to a Superintendent	Sussex Police
Provide a consistent response to all unauthorised encampments	Develop a joint Sussex Wide Unauthorised Encampment Protocol	Consistent approach being applied to unauthorised encampments	Sussex Police, Brighton & Hove City Council, East & West Sussex councils
Pro-actively liaise with any settled community affected by an encampment	Ongoing	The unauthorised encampment community engagement plan sets out responsibilities for Police	Brighton & Hove City Council

Strategic Action	Target	Current Position	Lead Partner
Expand Operation Monza into a joint approach	Council Traveller Liaison Officer to accompany Police on daily visits to sites	The full time Gypsy and Traveller Liaison Officer remains in post	Sussex Police & Brighton & Hove City Council
Provide necessary support the those residing on an unauthorised encampment	Ongoing	The Traveller Liaison Team is developing a Joint Support Protocol to formalise the working with other support services	Brighton & Hove City Council
Take appropriate action to move on an encampment based on community impact and Traveller needs	Ongoing	The site assessment and community impact assessments are carried out upon arrival of a new encampment	Brighton & Hove City Council
Work across the region to share good practice	To work through the new Sussex Joint Local Authority Traveller Forum	Good practice across the region is shared with other professionals working with Travellers at quarterly Pan Sussex Gypsy and Traveller meetings. Director level Regional Strategic Meeting to discuss provision for Travellers and responses to unauthorised encampments due to be held in December 2014	Brighton & Hove City Council
Goal 17 Ensure sensitive sites are protected			
Develop a corporate proactive approach to the protection of sensitive sites within available resources	To be developed during 2012/13	Externally funded bee banks aimed at improving wildlife are being used which also make access harder. The Traveller Liaison Team will be piloting the use of mobile cameras to deter trespass and evidence criminal damage	Brighton & Hove City Council
Assess sites on an ongoing basis in response to unauthorised use	Ongoing monitoring of sites	Following the works carried out previously to Withdean Park, Greenleas recreation ground, the Ladies Mile nature reserve, Carden Park and Hollingbury Park, there have been no further works completed e.g. major new barriers erected	Brighton & Hove City Council

Strategic Action	Target	Current Position	Lead Partner
Goal 18 Tackling crime, anti-social behaviour and nuisance			
To review and update the Operation Monza Tactical Plan	Annual review according to operational need	Operation Monza has been reviewed and a more flexible and responsive plan has been developed which supports council and the community reassurance plan	Sussex Police
To provide a dedicated full time Traveller Liaison Officer	Full time officer in post	The full time Gypsy and Traveller Liaison Officer remains in post	Sussex Police
Provide a prompt, efficient and sustainable waste collection service that tackles fly-tipping	New contract to start August 2012	Service continues with the 6x 1100 litre waste bins emptied once a week	Brighton & Hove City Council
Goal 19 Tackling racism, sexism and homophobia			
Developing new ways to encourage the reporting of crimes and incidents will be taken forward by community safety services and included within a work programme to develop community based reporting centres throughout the city for hate crimes.	Work to be undertaken during 2012 and will be completed by March 2013	A single case has been reported by a traveller family directly to the Community Safety Casework team and is being supported Direct outreach work and contact with the traveller communities are being used to increase trust and confidence, create awareness of the reporting mechanisms, and support available in the city to increase reporting	Joint Community Safety Delivery Unit
Goal 20 Develop a protocol for addressing Van Dwellers who are often mistaken for Travellers			
Develop protocol, Equality Impact Assess, consult, launch	To be developed in 2012/13	A multiagency approach is being piloted which will develop into the protocol. Research and review of legal powers is ongoing. Aiming to deliver spring 2015	Brighton & Hove City Council

Housing Strategy Team

Brighton & Hove City Council,
4th Floor Bartholomew House,
Bartholomew Square, Brighton BN1 1JE

e: housing.strategy@brighton-hove.gov.uk
w: www.brighton-hove.gov.uk/housingstrategy

DRAFT



Brighton & Hove
City Council